

# *Bay Head Historical Society*

*Serving Bay Head, Mantoloking, and Lovelandtown*

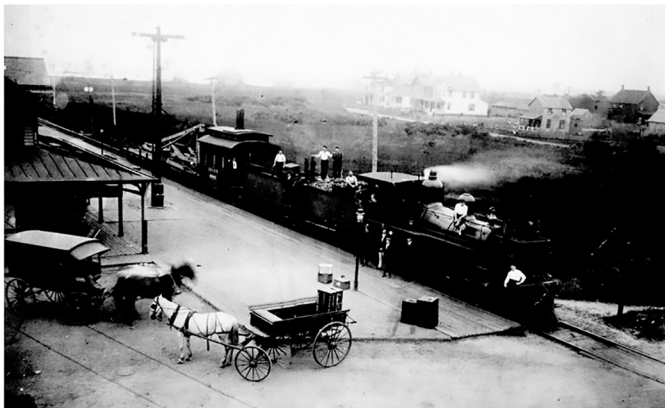
*P. O. Box 127, Bay Head, New Jersey*

**Spring 2025**

Dear Members and Friends of the Bay Head Historical Society,

After a long, dreary winter, we are excited to have you join us for an engaging and busy season. I am very pleased to announce the addition of two new members to our Board of Trustees: Ellyn Shannon resides in Lovelandtown; and Bill Kobasz who is a resident of Bay Head. They bring enthusiasm, energy, and valuable insights to our plans for a successful season at the Loveland Homestead Museum. We look forward to an exciting year together.

Our season will kick off with the Annual General Meeting on Saturday, June 21 at 10:00 am at Bay Head Borough Hall. The meeting will include a brief business session to review our 2024 activities and to give you a sneak peek at our plans for the June to December season.



Bay Head Railroad Station c.1905 by John Mars, Schoettle Collection

Our presentation will be about the railroad which has always been of interest to local residents. Bill Elwell MA is an Adjunct Professor of History and Anthropology at Monmouth University. He will definitely expand our knowledge of the railroad. A brochure c. 1890 that advertised the pleasure of the Jersey Shore suggested to title of his talk, **“FOR A GREAT VACATION ` GO BY TRAIN”**. This meeting is free and open to the public.

The 2025 opening will be Sunday, June 29th, 4 to 6 pm. If you are a map lover, this show may be of particular interest. Returning this year is **“MAPS II~ A JOURNEY THROUGH TIME”**, which picks up where last season’s exhibit ended. It highlights the development of local towns from 1870 to 1940. Please join us for a curator talk, wine and snacks. The museum will be open on Saturdays and Sundays from 1 to 4 pm.

Doris Czarnecki, President

*Bay Head Historical Society, Board of Trustees*

*Doris Czarnecki ~ President, David Kellogg ~ Treasurer, Catharine Coleman ~ Curator  
Thoms Royal, Tom VanNostrand, Patricia Burke, Bill Kobasz, Ellyn Shannon*

## IF THESE WALLS COULD TALK! THE INTRIGUE OF 18 BRIDGE AVENUE, BAY HEAD



18 Bridge Avenue, Bay Head, Photo Credit: Jerry Wooley

Mary Eliza Palmer resided at 18 Bridge Avenue. Mary's husband, Walter B. Palmer, passed away in 1876, leaving her with five young daughters. In the late 1880s, she married John Wheeler, a Democrat elected to Congress, serving from 1853 until 1857. It is likely that Mary bought the property and had the house built with funds she received from her father, Rufus Story's estate. He was a successful spice and coffee merchant in New York City and passed away in 1887. Mary was married to John Wheeler; thus, the house was called Wheeler Cottage.

In 1890, when the story of the house began, Mary's daughters were launching into adulthood. Mary's daughter, Emily Palmer, was one of the first five women admitted into Columbia College (now University, 1887). Emily and her female class members were remote learners. She asked President Barnard if she could please attend classes, as she lives right in New York City. President Barnard hoped to fulfill her wish. However, the Trustees, professors, and administrators believed that having young Emily in classes with men would be too distracting, so all they would allow was to let her sit with them for exams!

Emily graduated in 1887 and married Henry Cape in 1890. The newly married couple spent winters in New York City at 410 West End Avenue. They would have taken the train to Bay Head from Grand Central Station (built in 1871). Mary's new summer home was staffed with a gardener, seamstress, and a waitress all from Ireland. The kitchen was in the basement, with two cavernous brick root cellars extending under the lawn trap doors. Many of you know John Wardell, who will tell you how he and his brother delivered ice and coal to many homes in Bay Head. John delivered coal and was covered in soot at the end of each day. We are lucky to have John with us to share these stories at nearly 100 years old!

Emily Palmer Cape went on to become quite a remarkable woman. By 1910, she was an accomplished artist, writer, sociologist, and freethinker. She became a close friend and editorial assistant to Lester Frank Ward (America's father of Sociology) and published many of her works. She was a humanitarian and a Suffragist, fighting for women's right to vote!

More to come! As the details of Palmer women's lives unfold...Emily's younger sister, Julia, marries Naval Architect William Gardner, who designed the fastest ship to cross the Atlantic, holding the record for 70+ years. Emily's daughter, Vandy Cape, a soprano for the Metropolitan Opera, creates a campy show that Eleanor Roosevelt had her perform at the White House.

Author: Ellyn Shannon



# WILLIAM C. SCHOETTLE A PHOTOGRAPHIC RETROSPECTIVE OF OLD BAY HEAD

2021



## Bay Head Historical Society Serving Bay Head, Lovelandtown and Mantoloking BAY HEAD HISTORIC DISTRICT



1800 to 1899  
November 19th - December 14th  
The Loveland Homestead Museum is open to the public. Located at the corner of Bridge and Bay Avenues, on the border of Bay Head and Point Pleasant.  
BayHeadHistoricalSociety.com  
CHC-2017

### Historical Society Museum Serving Bay Head, Lovelandtown and Mantoloking

## LABONTÉ/SCHOETTLE

**Garden Party+Exhibit Opening!**  
5:00-8:00 Saturday, August 1, 2009  
**Free Exhibit! 1:00-4:00 Sunday, August 2**  
Historical Society Museum is free and open summer weekends 12-2 pm  
Bridge Avenue • Bay Avenue, border of Bay Head • Point Pleasant, NJ

### Bay Head Historical Society Serving Bay Head, Lovelandtown and Mantoloking

## All Aboard!

Model Train Diorama, Photographs, Maps, Video and Railroad Memorabilia  
Opening: Sunday, June 12, 3:00 to 6:00 pm  
Summer Hours: Friday through Monday 1:00 to 4:00 PM  
Loveland Homestead Museum  
Bridge Ave. & Bay Ave.  
border of Bay Head and Point Pleasant  
www.BayHeadHistoricalSociety.com

### Bay Head Historical Society Serving Bay Head, Lovelandtown and Mantoloking

## "THE BEST OF THE BAY"

### CARVED BIRDS OF BARNEGAT BAY

Complimented by the paintings of  
**GERARD RUTGERS HARDENBERGH**

Opening SUNDAY, June 7th, 3 to 6 pm  
Summer Hours: June 8th to September 7th, 2015  
1 to 4 pm Friday, Saturday, Sunday & Monday  
Bridge Ave. and Bay Ave., on the border of Bay Head and Point Pleasant  
www.BayHeadHistoricalSociety.com

### Historical Society Museum Bay Head Mantoloking Lovelandtown

## The Bluffs

1900-1905  
A GRAND HOTEL AT THE JERSEY SHORE  
AUGUST 4 - AUGUST 26 2007

OPENING FREE RECEPTION  
1-4 SUNDAY AUGUST 5  
8-8 SATURDAY AUG 4  
ONE EVENING ONLY  
FESTIVE EVENT  
ONE LAST CALL  
RECEIVE THE AVAILABLE  
THE JOEY BAR  
APPROXIMATE HARDWARE

HISTORICAL SOCIETY MUSEUM IS OPEN WEEKENDS 12-2 PM  
LOCATED AT BRIDGE AVENUE & BAY AVENUE  
BORDER OF BAY HEAD AND POINT PLEASANT

### Historical Society Museum Serving Bay Head, Lovelandtown and Mantoloking

History is so obvious that the safeguarding of life and property along the Jersey coast must have been one of the earliest of Federal activities. For many years the life-saving service was maintained by Joseph Francis of Toms River. These facilities soon proved their utility. On January 16, 1850, the emigrant ship "Ayrshire" with 201 passengers came ashore on Squaw Beach in the midst of a severe gale and the vessel was wrecked. With all its virtues, the inherent defects of a system wholly based on volunteer service soon became apparent, and in 1864 Congress authorized the establishment of a Federal Life-Saving Service. The first station was established at the mouth of the Delaware River. The first station was established at the mouth of the Delaware River. The first station was established at the mouth of the Delaware River.

Opening 1:00-4:00 Sunday, August 9  
Historical Society Museum is free and open summer weekends 12-2 pm  
Bridge Avenue • Bay Avenue, border of Bay Head • Point Pleasant, NJ

## SURFING THE JERSEY SHORE

### Opening Reception, Sun. June 10, 3 to 6

### Summer hours: Fri. thru Mon. 1 to 4

### Historical Society Museum Serving Bay Head, Lovelandtown and Mantoloking

## WWII REMEMBERED

AUGUST 22 - NOVEMBER 28  
OPENING 3-6 SUNDAY AUGUST 22  
Historical Society Museum is free and open summer weekends 12-2 pm  
Bridge Avenue • Bay Avenue, border of Bay Head • Point Pleasant, NJ

### Historical Society Museum Serving Bay Head, Lovelandtown and Mantoloking

## 100 YEARS OF FIREFIGHTING BAY HEAD FIRE CO. N°1 1913 ~ 2013

August 11 ~ October 14, 2013  
Opening 3:00 to 6:00, Sunday Aug. 11th  
Historical Society Museum is free and open Friday - Monday 1-4 pm  
Bridge Avenue • Bay Avenue, border of Bay Head • Point Pleasant, NJ

### Bay Head Historical Society Serving Bay Head, Lovelandtown and Mantoloking

## Painting the Jersey Shore 1900 to 1960

Curated by Roy Peterson  
Opening Reception, June 4, 2017  
3:00 to 6:00 pm  
Loveland Homestead Museum is open to the public  
Summer hours: Friday thru Monday 1-4 pm  
Location: corner of Bridge and Bay Avenues, at the Bay Head - Point Pleasant border.  
For information: BayHeadHistoricalSociety.com  
CHC-2017

### Historical Society Museum Serving Bay Head, Lovelandtown and Mantoloking

## Decoy

from the Earle-Pilling Collection  
August 14 - September 18, 2011

### Bay Head Historical Society Serving Bay Head, Lovelandtown and Mantoloking

## THE BAY HEAD SCHOOL A HISTORY OF EDUCATIONAL EXCELLENCE

Opening Reception, SUNDAY, OCT. 14TH  
3:00 to 5:00 PM  
Loveland Homestead Museum is open to the public  
Season hours: Saturday and Sunday 1 to 4 pm  
Located at the corner of Bridge and Bay Aves., at the Bay Head - Point Pleasant border  
Information: BayHeadHistoricalSociety.org  
CHC-2014

### Bay Head Historical Society Serving Bay Head, Lovelandtown and Mantoloking

## POST CARD VIEWS From The Past

Bay Head, Lovelandtown and Mantoloking

Opening Reception  
Sunday, August, 13th, from 4 to 6pm  
Seasonal Hours: Saturday & Sunday, from 1 to 4 pm  
Loveland Homestead Museum  
Corner of Bridge and Bay Avenues, at the Bay Head - Point Pleasant border  
For information: www.BayHeadHistoricalSociety.org  
CHC-2013

### Bay Head Mantoloking Lovelandtown Historical Society Museum

## DICK LABONTÉ

## PAINTING HISTORY

SELECTIONS OF PAINTINGS OF THE BAY FOR ONE HUNDRED YEARS  
14 PM SUNDAY AUGUST 20 2006  
12-2 PM SATURDAY & SUNDAY AUGUST 26-27 & SEPTEMBER 2-3  
HISTORICAL SOCIETY MUSEUM IS LOCATED AT BRIDGE AVENUE - BAY AVENUE BORDER OF BAY HEAD - POINT PLEASANT

### Bay Head Historical Society Serving Bay Head, Lovelandtown and Mantoloking

## Maps A Journey Through Time

Opening Reception,  
Sunday, June 23, 4:00 to 6:00 pm  
Loveland Homestead Museum is open to the public.  
Summer hours: Saturday and Sunday 1 to 4 pm  
Location: corner of Bridge and Bay Avenues, at the Bay Head - Point Pleasant border.  
BayHeadHistoricalSociety.org  
CHC-2024

### Historical Society Museum Serving Bay Head, Lovelandtown and Mantoloking

## BAY HEAD THEN & NOW

Opening Reception  
Sunday June 8, 2004, 12:00 - 3:00  
Historical Society Museum is open summer weekends, 12:00 - 2:00  
Located at Bridge Avenue & Bay Avenue, border of Bay Head & Point Pleasant

### Bay Head Historical Society Serving Bay Head, Lovelandtown and Mantoloking

## Law and Order in Old Time Bay Head

Bay Head's early years of local incidents with photographs from our collections  
Opening: Sunday, June 9th, 3:00 - 6:00 pm  
Gallery Talk By Mayor Curtis, 4:30 pm  
Summer Hours: Friday through Monday 1:00 to 4:00pm  
Loveland Homestead Museum  
Bridge Avenue and Bay Avenue  
border of Bay Head and Point Pleasant  
www.BayHeadHistoricalSociety.org

### Historical Society Museum Serving Bay Head, Lovelandtown and Mantoloking

## ABSORBING SANDY

MAY 26 - JULY 28 2013

Opening 3:00 - 6:00 • GALLERY TALK 5:00 • SUNDAY MAY 26  
Historical Society Museum is free and open Friday - Monday 1-4 pm  
Bridge Avenue • Bay Avenue, border of Bay Head • Point Pleasant, NJ

### KATE LEIGH CUTLER

## BEATON BOAT YARD

SEPTEMBER 2 - 10 2007

## 1.25 Miles of Sand and Surf

A History of the Bay Head Beach

Opening: Sunday, June 19, 3:00 to 5:00pm  
Seasonal Hours: Saturday and Sunday ~ 4:00 to 4:00pm  
BayHeadHistoricalSociety.org



## Curator's Notes:

On the previous page, you will see a collage representing 21 separate exhibits displayed at the Loveland Homestead Museum over the past 20+ years. Each show shares a specific process: an idea or concept, research, and materials sourcing. These materials could be almost anything, from photographs to ephemera such as letters or newspaper articles, from clothing to objects that bring the subject to life for museum patrons. When the exhibit ends, what happens to all of the history, and all of these stories? We are currently trying to keep the collections together and storing them on the museum's second floor. Investing in an interactive digital table, allowing each exhibit to come alive and be available to all museum guests. The technical equipment will cost between \$5000 and \$7000 including the table, electronics and basis programs. The cost of digitizing all the information will be additional.

I am reaching out to the community for expert advice and funding. Please consider this: you can reach me through Constant Contact on our website.

Cathie Coleman

Don't forget that volunteers are essential in keeping our museum operating.

Renew Your Membership, donate: Your contributions will help maintain our collections, as well as our buildings and grounds; this income allows us to present exhibits and programs which are interesting and educational. Your donation is tax-deductible; your check is your receipt. BHHS is a tax-exempt corporation (22-3219135). Mail your check to BHHS, P.O. Box 127, Bay Head, New Jersey 08742.

Individual Annual Membership \$40      Family Annual Membership \$50 \_\_\_\_

Individual LIFE Membership \$400      Family LIFE Membership \$500

Benefactor \$5000      for general Fund or be allocated to a special project.

Business or Association Membership \$150      Other Donation \$ \_\_\_\_

Name: \_\_\_\_\_

Primary Address: \_\_\_\_\_

E-mail Address: \_\_\_\_\_