

# Bay Head Historical Society

*Serving Bay Head, Mantoloking and Lovelandtown*

*P. O. Box 127, Bay Head, New Jersey 08724*

Summer 2018

Dear Members and Friends of the Bay Head Historical Society,

The first half of this year has been busy and very productive. Board of Trustees elections were held in January with the following officers elected. Cathie Coleman, President; Robert Hein, Vice President; David Kellogg, Treasurer and Doris Czarnecki, Secretary. Toms Royal, Tom Van Nostrand, Patricia Burke and Linda Clarke also serve on the Board of Trustees. I am honored to assume my new position at the Bay Head Historical Society. As a volunteer and board member for over ten years and the curator of the Loveland Homestead Museum since 2013, I am well aware of the awesome task before me.

The second phase of ongoing maintenance and updating of the museum began in February 2018. The second-floor walls and ceiling sustained considerable damage due to the sinking and subsequent elevation of the west end of the building; all repairs have been completed. The bathroom was totally refurbished. The first-floor walls were painted and trim work was stained. Additional outlets were installed on both floors. The entrance porch and steps were repaired and painted. Lastly, the outdoor lighting for security and safety is almost complete.



Such major repair work can be quite disruptive but it has allowed us to take a good look at our various collections, artifacts and exhibit materials, and to make sound judgements regarding archiving and collection needs. We have purchased *Past Perfect Museum Software* which is a collection management program to guide us in this important task. At some point we hope to encourage people to use our facility as a source for historical research about our local history in photographs, maps, books, artifacts and eventually, oral histories. The museum will always reserve the right to share information in a manner that conforms to our mission statement.

I look forward to seeing you at the Loveland Homestead Museum this season.

Sincerely,

Cathie Coleman

## SURFING THE JERSEY SHORE:



“If you are having a bad day, catch a wave”, said Frosty Hesson or visit the current exhibition at the Loveland Homestead Museum. Surfing on the beaches of Bay Head and surrounding area has been a part of our year-round culture for more than sixty years. Our current exhibition has been co-curated with Eric Byer of Beach House Classic Boardshop in Bay Head. On display are 17 surf boards, surf shop tee shirts, photographs and much more. This collaboration has drawn individuals of all ages. The exhibit is ever changing as surfing aficionados contribute some of their favorite mementos to share with others. Season hours Friday through Monday, 1:00 to 4:00.

## UPCOMING EXHIBITS

In early October we plan to open a new display featuring the Bay Head School. There is so much information and so many local memories connected with the school. Museum archives contain a considerable amount of information concerning the long history of the Bay Head School. This story is not only for those who attended school but for the community at large. *If you have photographs of the school, school events or class pictures which you are willing to share, please contact us through our web site [BayHeadHistoricalSociety.org](http://BayHeadHistoricalSociety.org).*

## SUMMER INTERN

Brittany Smith, a senior at Moore College of Art and Design in Philadelphia, majoring in illustration, has joined us as a summer intern. She will spend 240 hours with us, enhancing some of our permanent displays with appropriate drawings and developing a new logo/emblem based on our specific needs. Her talent is greatly appreciated. We are sure that when you visit the museum in the future you will enjoy the updated displays.

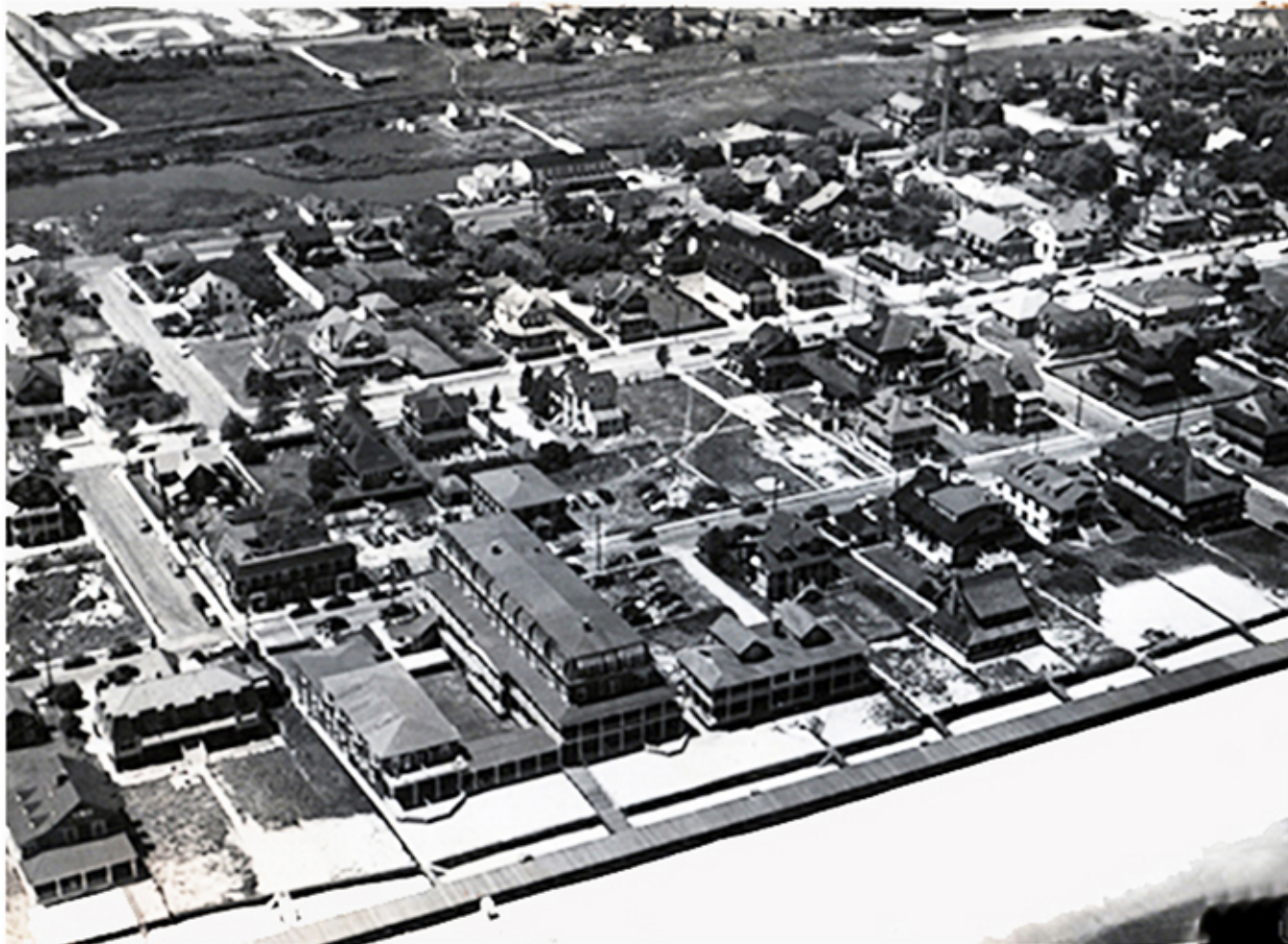


Brittany Smith, Student Intern 2018 and her illustration of the Loveland Homestead Museum.





## INTERESTING DONATIONS



You might be interested to know that one of the ways our collections are expanded is through donations, often anonymous. In the past week the following items have come into our possession. Over 175 color photographs with negative were left in the mailbox, marked only “1993 Bay Head – Mantoloking residences”. Two woven baskets were left on the porch with no information provided. A journalist shared a selection of his own newspaper articles about surfing. Lastly a treasure-trove of post 1986 Bluff Hotel memorabilia, all interesting and valuable, was donated to the museum by Ron Curtis, Jr. Included was the above aerial photograph showing the Bay Head beach front from Chadwick Street to Mount Street, c.1945. The Bluffs Hotel can be seen at the center, on the beach.

BHHS is grateful for all appropriate donations. It is always best that we receive donations directly so that we can gather as much historical information as possible. This allows for the most accurate identification and archiving.

## HOUSE HISTORIES

Henry Lane, a Bay Head resident and friend of the Bay Head Historical Society, volunteers to research the ownership history of local homes. This information is combined with available vintage and current photographs in a presentation packet. This is a great gift for any home owner. Additional information can be requested through Constant Contact at our web site BayHeadHistoricalSociety.org.

## VOLUNTEER SUPPORT NEEDED

Bay Head Historical Society's Loveland Homestead Museum offers a program that we call *Pocket Projects for Volunteers*. We recognize that our lives are busy and although we may want to volunteer, it is not practical to commit to a certain number of hours or a set schedule. Perhaps you are interested in maps and letters, repairing a chair or working in our garden. We are happy to talk with you and find a project that is enjoyable and satisfying that can be completed in the time that you have available.



Renew your membership, make a donation: Your contributions help restore and maintain our valuable collections, as well as our buildings and grounds. Income allows us to continue to present exhibits and programs which are interesting and educational. Your donation is tax deductible; your check is your receipt. BHHS is a tax-exempt corporation (22-3219135). Mail your check to BHHS, P.O. Box 127, Bay Head, N.J. 08742

Individual Annual Membership \$40 \_\_\_\_\_ Family Annual Membership \$50 \_\_\_\_\_

Individual LIFE Membership \$400 \_\_\_\_\_ Family LIFE Membership \$500 \_\_\_\_\_

Business or Association Annual Membership \$150 \_\_\_\_\_ Other Donation \$ \_\_\_\_\_

Name: \_\_\_\_\_

Primary Address \_\_\_\_\_

E-Mail Address: \_\_\_\_\_

Check here if you require a mailed newsletter



Summer 2018