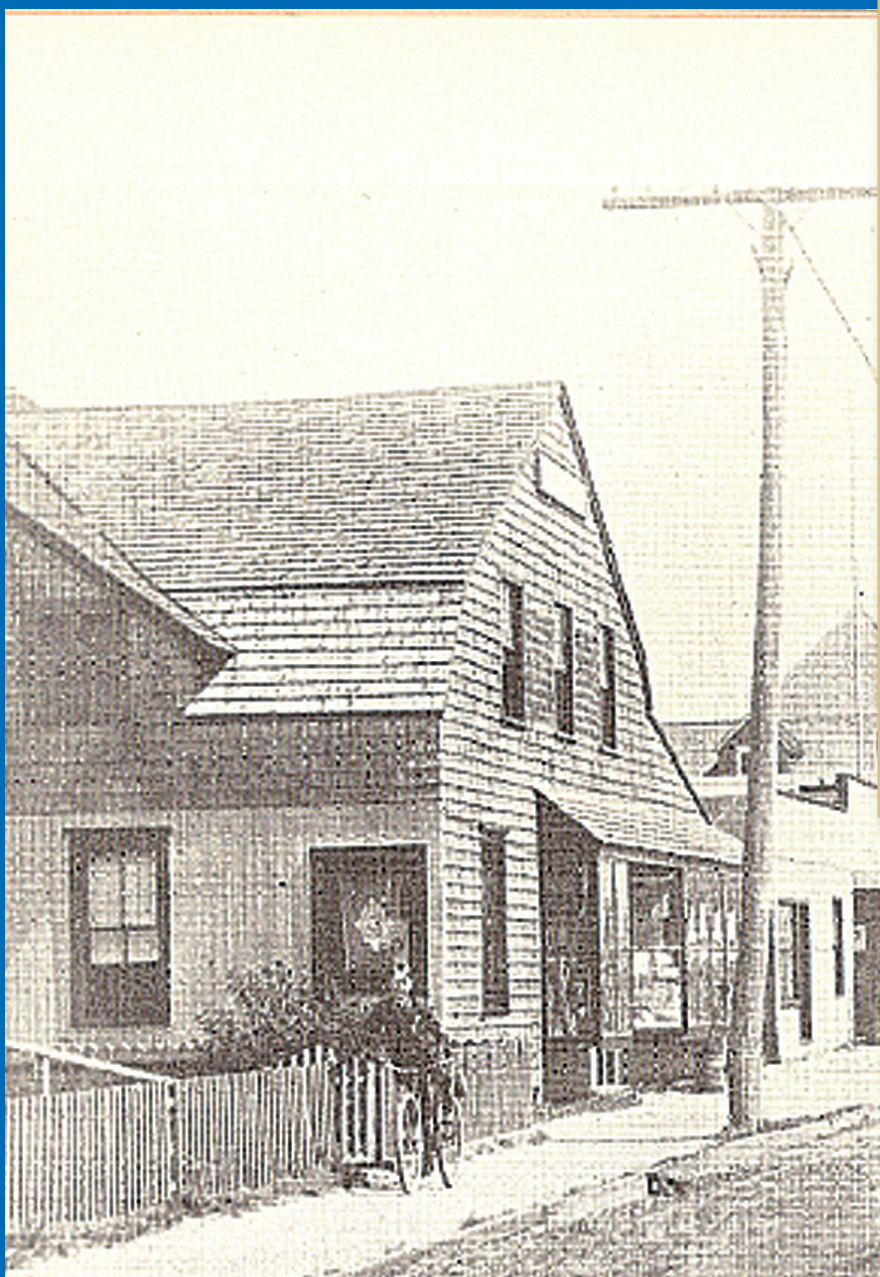
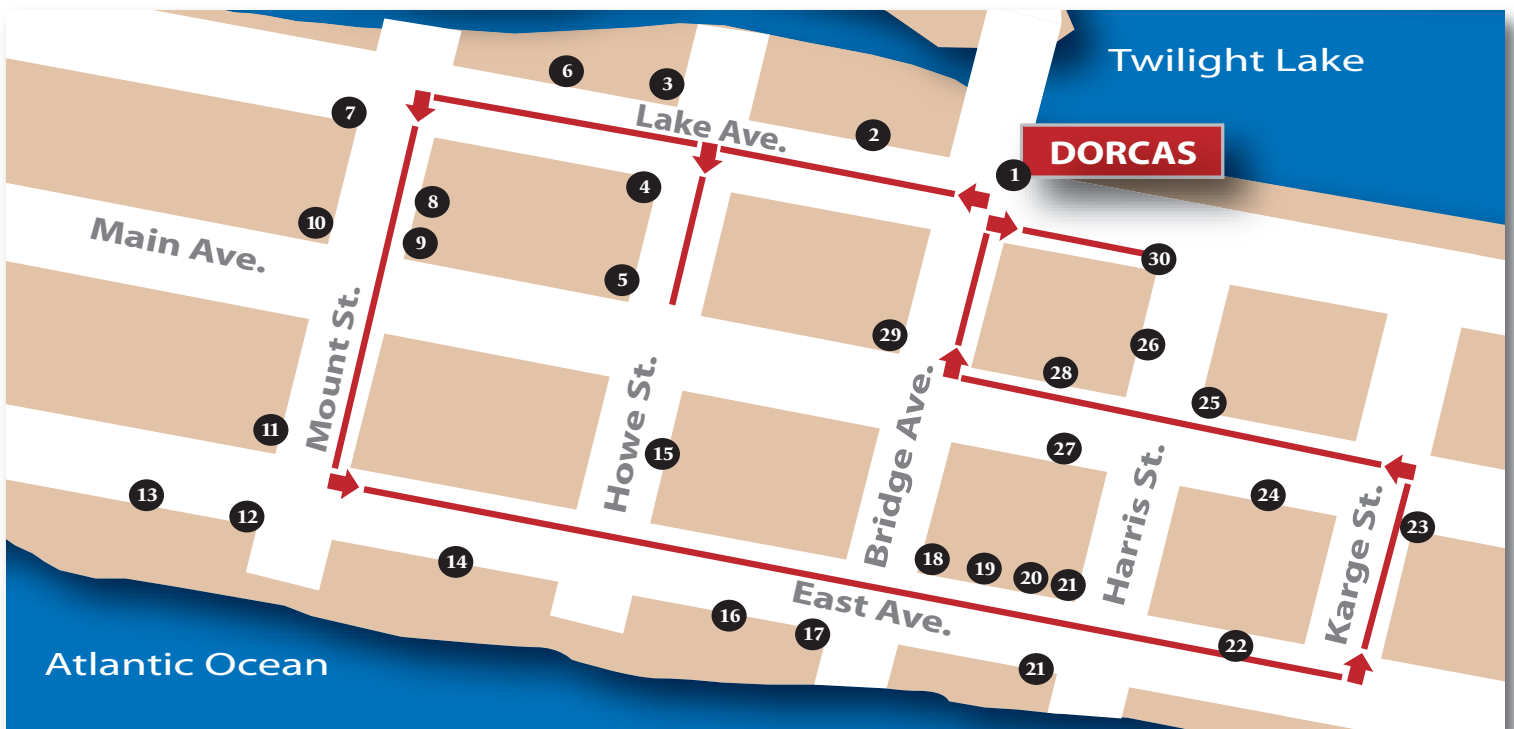


Bay Head Walking Tour

June, 2010



Bay Head Walking Tour Route



- | | | |
|----------------------|------------------------|---------------------|
| 1. 58 Bridge Ave. | 11. 17 Mount St. | 21. 15 Harris St. |
| 2. 444 Lake Ave. | 12. 1 Mount St. | 22. 344 East Ave. |
| 3. All Saints Church | 13. Founder's Cottages | 23. 30 Karge St. |
| 4. 55 Howe St. | 14. 513 East Ave. | 24. Grenville Hotel |
| 5. 500 Main Ave. | 15. 22 Howe St. | 25. 40 Harris |
| 6. 524 Lake Ave. | 16. 453 East Ave. | 26. 41 Harris |
| 7. 55 Mount St. | 17. 3 Bridge Ave. | 27. 409 Main Ave. |
| 8. 42 Mount St. | 18. 18 Bridge Ave. | 28. 410 Main Ave. |
| 9. 530 Main St. | 19. 416 East Ave. | 29. Bay Head Chapel |
| 10. Central Market | 20. 406 East Ave. | 30. 50 Harris St. |

1. Begin at 58 Bridge Ave. (Dorcias)



58 Bridge Ave. at the intersection of Bridge and Lake Aves. was constructed in 1882. Perhaps this is the best place to start as this is where the development of Bay Head started in the early 1880s at the former Bayhead Land Company's office. Although somewhat altered with asbestos shingles, the building retains elements of the Queen Anne style such as cross gables, gable-end pent roofs, oriel window, interior brick chimney, wrap-around porch (now enclosed) and a projecting front gable.

Next head South on Lake Ave.

2. 444 Lake Ave.

This is a two-story, three bay, wood frame, residential building constructed in 1898. The mansard-roofed house has shed-roofed dormers and a shed-roof over the first floor recessed porch. Please notice the sawtooth vertical boards at the end of the porch (which you will see again) as well as the original shutters and the original 16/2 windows. According to the 1905 Sanborn map, this house was the borough hall and the post office with a single jail cell in a separate back building.



Continue South on Lake Ave.

3. 500 Lake Ave.

On the southwest corner of Howe and Lake Aves. and founded in 1889, All Saints church is the oldest church in Bay Head. All Saints was a four-bay meetinghouse with an entrance located on the north side. A transept with square tower at the crossing was added at a later time. The belfry was built in 1905. Although the architect is unknown, local builder Wyckoff Applegate built the original building.



Cross the street from the Church to Howe St.

4. 55 Howe St.

Across the street from the church is 55 Howe St. which is a Craftsman bungalow constructed c. 1910. The stucco and shingle house features a recessed porch, a front dormer pediment and a projecting hipped side dormer.



*Turn left and walk toward Main Ave.
on Howe St.*

5. 500 Main Ave., 37 Howe St, 47 Howe St.

At the southwest corner of Main Ave. are three houses built by the Mount family for David H. Mount, Jr., M.D. (500 Main Ave.) and two of his four sisters, Flora and Anna (37 Howe St. and 45 Howe St.) about 1882-3. 500 Main Ave. originally was built in the Stick style, as evidenced by the photo to the right, with dark red clapboard siding, as many of Bay Head's early houses were, and remodeled c. 1905-1910 into the Shingle style with cypress shingles from the Santee River Cypress Lumber Co. of Ferguson, S.C. Notice the original 36 paned Dutch front door, common to many early Bay Head houses. Also notice the original decorative bargeboards which you will also see on the rear of 416 East Ave. and on 21 Harris St.



Backtrack West toward Lake Ave. turn left on Lake Ave.



6. Applegate's Hardware

Heading south to 524 Lake Ave. is Applegate's Hardware which was founded by one of Bay Head's early builders, Wyckoff Applegate, about 1910 and is still operated by his descendants.



Continue South on Lake Ave.

7. 55 Mount St.

On the southeast corner of Lake Ave. and Mount St. is 55 Mount St., a single story, three bay, rectangular vernacular bungalow constructed c. 1920.



Turn left on Mount St. and head East towards the ocean

8. 42 Mount St.

A Shingle style house constructed prior to 1880. Most likely this house was originally clapboard sided and predated the Bayhead Land Co.'s development.



Continue East toward Main Ave.



9. 530 Main Ave.

On the northwest corner is 530 Main Ave. which was built in 1914 as Chafey's Drug Store in the Spanish Colonial Revival style.

10. Curtis' Central Market

Across Mount St. is Curtis' Central Market. These earliest commercial buildings, constructed c. 1875, stand joined together in this business block. Chadwick's (later Fleming's) grocery on the north and the Central Meat Market on the south (formerly Charlie Wing's Laundry) were combined to form the Central Market.



*Proceed across Main Ave.
to 17 Mount St.*

11. 17 Mount St.

17 Mount St. is on the southwest corner of East Ave. and Mount St. 17 Mount St. is a 2 ½ story, five bay, rectangular plan, wood frame Shingle style house constructed soon after publication of the 1905 Sanborn Map. The house is known as the Oliver Hazard Perry house because c. 1913 Oliver Hazard Perry lived there. Mr. Perry was a direct descendant of Oliver Hazard Perry, the hero of the Battle of Lake Erie in the War of 1812.



12. 1 Mount St.

Across the street from the Perry house is 1 Mount St., the Ver Planck/Cattus house, which shows on the 1883 Bayhead Land Co. map. The hipped roofed house is dominated by a cross gable with smaller hipped dormers and by a huge, two story wrap-around porch. The Ver Planck family was historically associated with the Metropolitan Museum of Art in New York.

13. The Founder's Cottages

The three houses to the south of 1 Mount are known as "the Founders' Cottages" because they were built for David H. Mount, Sr., Edward Howe and William Harris, the three founders of the Bayhead Land Co. All three houses, as well as 1 Mount, were moved back from the ocean to protect them from ocean storm damage.



Walk North to 513 East Ave.

14. 513 East Ave.

This house is known as “the Centennial Cottage” as it was thought to be the Connecticut Building moved to Bay Head from the 1876 Philadelphia Exposition. However it bears little resemblance to contemporary pictures of that building but it is a prominent example of the Shingle style form.



Walk North again to 22 Howe St.



15. 22 Howe St.

Walk north again and you will see 22 Howe St. on the northwest corner of East and Howe. This is the Hall-Studdiford Cottage constructed c. 1880 built for Dr. Andrew Douglas Hall of Philadelphia. Hall's daughter, Maria, lived directly across the street at 21 Howe St. (nearest photo to left) which was demolished in 2006. On 22 Howe St., notice the interesting decoration on the east gable trim. You will see the identical trim further ahead on 26 Bridge Ave.

Continue North on East Ave.

16. 453 East Ave.

This house was constructed about 1900. This gable-front house features a two story, shed-roofed porch that extends around the south elevation with a plain balustrade, shed dormers and overhanging eaves with exposed rafters. Exposed rafters are a characteristic feature of early Bay Head houses. This house once belonged to the Egbert family.



*Walk North to the intersection of
Bridge and East Avenues*

17. Howard Clark Cottage

To the right on the southeast corner is 3 Bridge Ave. which is known as “the Howard Clark Cottage.” The c. 1899 oceanfront house is a very large, 2 ½ story, five bay, irregular plan, Shingle style house with its long axis parallel to the ocean. The house recently underwent a first class restoration including wooden replacement windows.



18. 18 Bridge Ave. and 26 Bridge Ave.

On the northwest corner of this intersection is 18 Bridge Ave. and just to its west is 26 Bridge Ave. 18 Bridge is known as “Wheeler’s Home Cottage” and was constructed soon after the 1883 Bayhead Land Co. map was produced. The house retains the original fenestration with irregular, multi-paned upper sash over two lights below. Originally this house was sided with painted clapboards. Also notice that this property retains the old bluestone sidewalk. 26 Bridge Ave. shows as being located closer to the corner on the 1905 Sanborn Map and was moved to its present location in the 1920s. Notice the interesting decoration on the gable trim as well as the 3 ½ story tower at its northwest corner.



Continue North on East Ave.

19. 416 East Ave.

You will come to 416 East Ave. and its former twin, until it was remodeled, 412 East Ave. Both appear on the 1883 map. 416 has a Stick style influenced, two story, shed roofed porch. This house retains its original, decorated vergeboard on the rear gable. Originally there was also one of these decorated vergeboards on the front elevation. This house also was originally sided with painted clapboards. Please notice the original Stick style garage, Bay Head's only remaining example in its original form. The clapboard-sided, Stick style of architecture was common in 1880s Bay Head.



20. 406 East Ave.

Two houses to the north is 406 East Ave. which was built c. 1900. The side gambrel-roofed house is ornamented with a Doric column-supported wrap-around porch with a plain balustrade.

Continue walking north to the intersection of Harris Street and East Ave.



21. 400 East Ave., 15 Harris St., 21 Harris St.

On the southeast corner is 15 Harris St. which was built c. 1900 and was recently nicely renovated. On the southwest corner are 400 East Ave. (c. 1900) and to its west, 21 Harris St. which was built for Cornelia and Henry W. Buxton c.1882. Originally 21 Harris St. was a dark red clapboard sided residence with dark green trim. The side elevations of the porch and balcony roofs are clad with sawtooth vertical boards, a typical decoration in the early houses. The house was recently restored which included restoration of the north-facing balcony and brick porch piers which had been removed. Early photo (below left) taken c. 1903 shows all three houses looking from the west and a recent photo (below right) showing the original colors of 21 Harris St.



Continue walking to the North on East Ave.

22. 334, 338, 336 East Ave.

Continue to 344, 338 and 336 East Ave. 344 East Ave. shows up on the 1883 Bay Head map. A second story shed-roofed sleeping porch (now enclosed) still survives. 338 and 336 East Ave. look like they could have been constructed by the same builder c.1900. The shingle clad piers taper inward at their tops creating segmented arches in the porch, a common design theme in early Bay Head.



Turn left on Karge St.

23. 30 Karge St.

On the northeast corner of Main Ave. and Karge St. is 30 Karge St. which appears very much as it did c. 1883 when it was built. The intersecting gable-roofed house is articulated by clipped gable ends. Additional architectural details include: a shed-roofed wrap around porch set on plain posts with shaped brackets. Again we see the sawtooth vertical board decoration surrounding the base of the second story porch.



Turn left on Main Ave. and walk South

24. The Grenville

Proceed south to 345 Main Ave. The "Grenville Hotel" was built as a three story hotel about 1890. This Queen Anne building was built with irregular massing creating a three dimensionality so common in this architectural style. It had another half story added at an early date.



25. 40 Harris St.

Continue walking south to the corner of Main Ave. and Harris St. On the northwest corner is 40 Harris St. once known as "the Norton Cottage" which was constructed c.1890. This side gable roofed house is dominated by a large, front-facing hipped-roof dormer. The overhanging eaves have spectacular, exposed decorated rafters. Just to the west of 40 Harris is 42 Harris St. Originally known as "the Palmetto Cottage" because it had palmetto tree trunks from South Carolina as porch posts. This house has been significantly remodeled.





26. 41 Harris St.

Across the street from 42 Harris is 41 Harris St. constructed about 1885. The original 2/2 wood double hung windows are set in wide board window architraves. Built for the Priest family whose drug store still stands around the corner at 410 Main Ave.



27. 409 Main

Continue south on Main Ave. to 409 Main Ave., a Queen Anne influenced house built about 1895. You can see 409 Main to the right of the horses in the photo (right) taken about 1903.





28. 410 Main

Across the street is 410 Main Ave., originally known as “Priest’s Drug Store” and 414 Main Ave. to its south, both constructed about 1880. 410 Main is the building which is the mansard roofed building with three hipped dormers and a shed-roofed porch supported on thin square posts with a plain balustrade. The first floor porch has been enclosed to provide commercial space. 414 Main contains original 2/2 double hung windows. The side elevation of the porch roof is clad with sawtooth vertical boards.

Continue to the corner of Main and Bridge Aves.



29. Bay Head Chapel

You will see the Bay Head Chapel at 440 Main Ave. It was moved from its original site near Scow Ditch in 1910. The present structure was remodeled in the 1950s when its bell tower was removed and the whole building given Colonial Revival ornamentation.



Cross Main Ave. and proceed West on Bridge Ave. to your starting point

30. 50 Harris St. and 357 Lake Ave.

After getting to the corner of Lake and Bridge Aves., you may want to head north again on Lake Ave. to the corner of Harris and Lake Ave. On the northeast corner is 50 Harris St. and just to its north, 357 Lake Ave. These two 1 ½ story houses were constructed about 1882 for the other two other sisters of D. H. Mount, Jr., Madeline and Maria. Originally these two houses were also built in the Stick style (with clapboard siding) as evidenced in the above right photo c. 1880s. The above left photo was taken during the recent renovation of 50 Harris. You can see the vertical decorative boards (sticks), illustrating the Stick style, above the two upstairs windows.



DECORATIVE ELEMENTS

It is also interesting to note the similar decorative elements that are common to many of the early houses (sawtooth vertical boards, the 36 paned Dutch front doors, moveable louvered shutters, open porches, exposed rafters, balconies and decorative bargeboards). There are also interesting interior decorative motifs (see photos to left) that are similar in many early houses, leading to the conclusion that many early houses were constructed by the same builders. It would be fascinating to know where these builders got their design ideas.



Bay Head Walking Tour

This walking tour was created in June 2010 by Ed King with help from excerpts from the Bay Head National Register of Historic Places Registration Form submitted by Ulana Zakalak, Historic Preservation Consultant, in 2005. It is hoped from viewing just a few of Bay Head's historic buildings that three important causes will be served: physical fitness (walking), environmental protection (by helping to prevent the destruction of perfectly good structures which end up in landfills) and the proper historic preservation of our important man-made structures which help create Bay Head's unique character.

© Copyright 2010, Bay Head Walking Tour. Reproduction prohibited without permission.